

Low Energy Consuming Mini WiFi Camera

Instruction Manual

Thank you for your choosing, please follow the Instruction Manual to use the camera. Please follow the Instruction Manual Step-by-Step to setup the camera successfully.

Related operation videos can be found on YouTube or Anlork website.

www.anlork.com



F series



R series

Note: Only support 2.4G WiFi
Most routers have 2.4G/5G dual signal options, please choose 2.4G network.

Catalog

Features.....	Page 1
Interface description.....	Page 2
Interface use.....	Page 3
Start to use.....	Page 4
APP installation.....	Page 5
Hotspot setting.....	Page 7
WIFI setting.....	Page 15
APP interface	Page 18
Function setting	Page 19
Specifications.....	Page 20
Package	Page 21
Notes.....	Page 22
After sales service	Page 23
Installation method.....	Back cover

Features

- ◆ The camera can be used while charging.
- ◆ Support Hotspot, WiFi and 4G mobile network to view.
- ◆ Built-in 1000mA lithium battery.
- ◆ Continuous recording time: 8 hours.
- ◆ Supports night vision mode, built-in infrared light.
- ◆ SD card max capacity 128Gb(Not included).
- ◆ Built-in Microphone.
- ◆ Supportst motion detection.
- ◆ Supports multiple users to connect and view at the same time.
- ◆ Built-in magnet, the camera can be attached on any magnetic surface easily.
- ◆ Supports IOS and Android smart phones.

Note:

Please charging the camera for 1 to 3 hours before your first using.

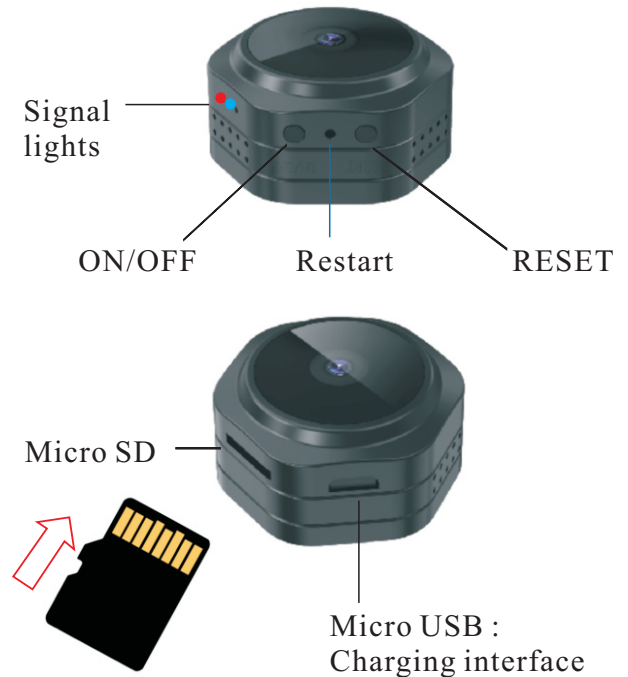
Interface description

F series



2

R series



Interface use

◆ Turn ON:

Hold the ON/OFF button for 2 seconds until the red and blue lights flash together. Wait until the blue light bright and the camera hotspot powers on.

◆ Turn OFF:

Hold the ON/OFF button for 2 seconds until the red and blue lights flashes turn off together. the camera will power off.

◆ Restart:

Press the small hole between ON / OFF and restart using a thin object.

◆ Reset to hotspot mode:

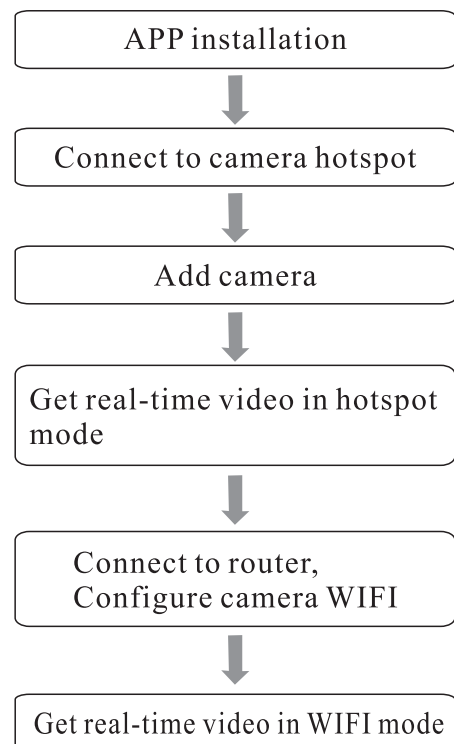
When the camera is connected to WIFI, hold the Reset button for 2 seconds wait until the red and blue lights turn on, The camera go back to hotspot mode and needs to reconnect the camera ID.

Note:

During the connection process, please observe the color and status of the indicator light (The above is the indicator color display without SD card).

3

Start to use



4

APP installation

IOS: Search “Video0” in App Store.

Android: You can also scan the below QR code to install.



IOS



Android



Video0

Note: <https://bit.ly/3FHFEXe>

Android APP, need to download the APK file for installation, we will upload the APP to the Google Store as soon as possible,

Note:

In order to ensure the normal use of APP functions, please agree to the relevant authorization.

5

Note:

There are two ways to add a camera , auto mode and manual mode.

Auto Mode:

Need to turn on the mobile phone “Location Services”.

When the phone WIFI selects the camera ID, the APP will automatically detect and add the camera.

Manual Mode:

Due to the mobile phone system and version, the APP cannot automatically detect and add a camera. At this time, You need to add cameras in manual mode.

In order to use the camera quickly, after the hotspot mode connection is successful, we will connect to the WIFI.

Thank you for your understanding.

6

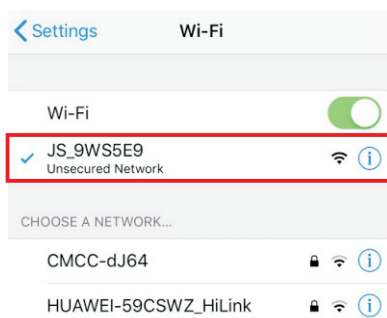
Hotspot setting(Auto Mode)

Hotspot mode:

Without internet access, you can also use the hotspot working mode of the wireless camera for short-distance viewing.

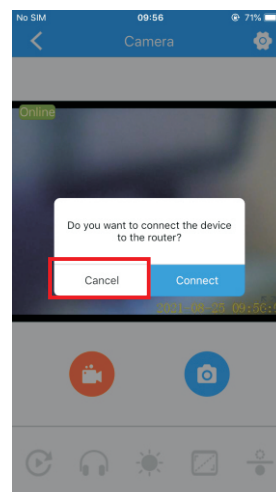
Step1: Hold the ON/OFF button for 2 seconds until the red and blue lights flash together. Wait until the blue light bright and the camera hotspot powers on.

Step2: Enter “Wi-Fi” setting, connecting hotspot in “JS-XXXXXX”.



7

Step3: Open “Video0”



Note:

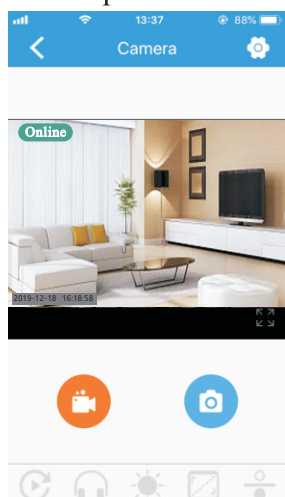
In auto mode, Need to open the location services of the phone.

At this time, The APP will prompt whether to connect to the router.

Choose "Cancel" First enter the hotspot mode to watch the video, and then connect to WIFI.

8

Step4: Click “Cancel” ,Get real-time video in hotspot mode.



At this time, the hotspot mode connection is successful, and you can watch real-time video in a short distance.

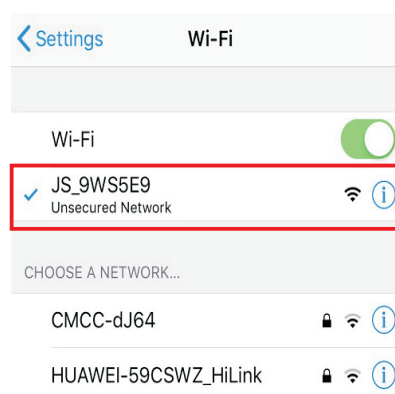
Next step,
please check page 15, how to set up WiFi.

9

Hotspot setting(Manual Mode)

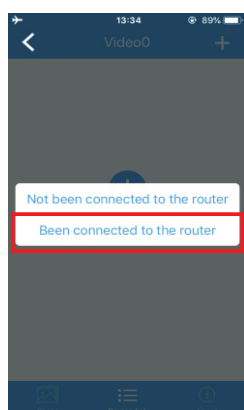
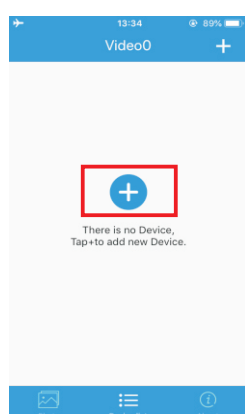
Step1:Hold the ON/OFF button for 2 seconds until the red and blue lights flash together. Wait until the blue light bright and the camera hotspot powers on.

Step2:Enter“Wi-Fi” setting, connecting hotspot in “JS-XXXXXX”.



10

Step3: Open “Video0” , click



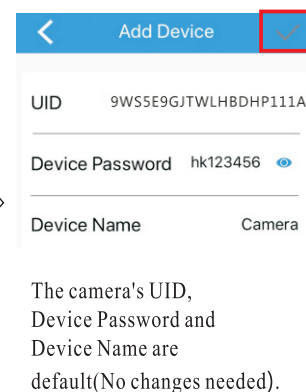
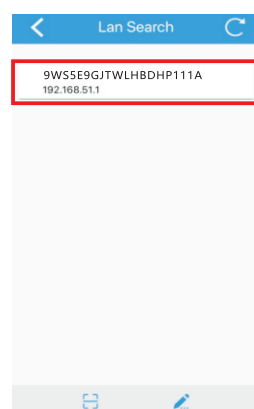
Step4: Click “Been connected to the router”.

Note:

- ◆ Please confirm that the mobile phone WIFI has been connected to the camera ID (JS-XXXXXX).
- ◆ If you cannot find the camera ID, please Restart the camera.

11

Step5:Click the information display area.



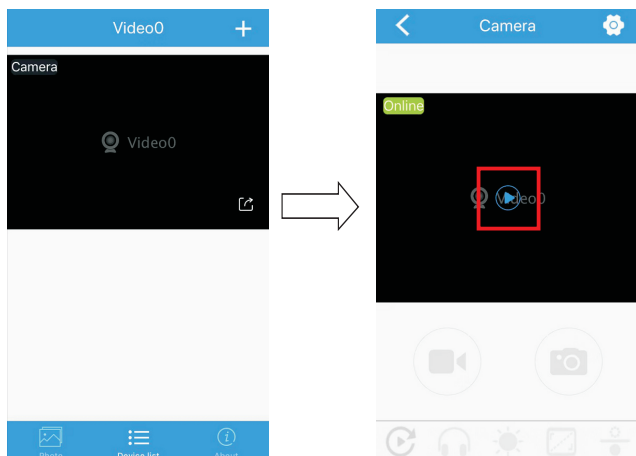
Password default:hk123456


Step6: Click  to save parameters, add camera.

System display:“Camera successfully added”

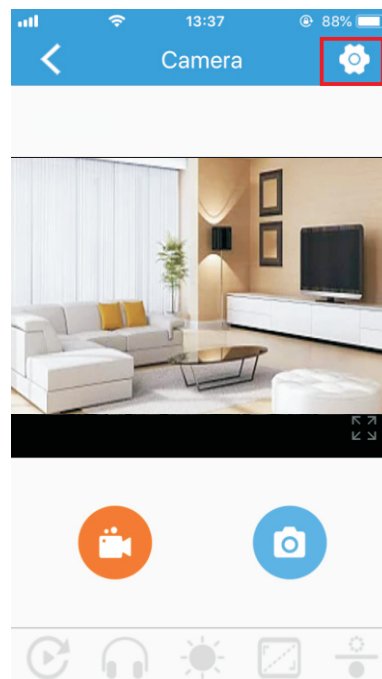
12

Step7: Click image to view



Step8: Click  to enter live image viewing

13



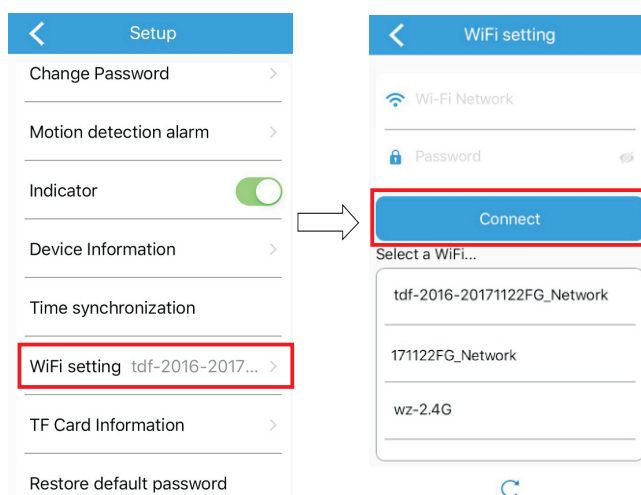
Note: Hotspot mode is complete.

14

WiFi setting

Please set the hotspot before setting up the WiFi network.

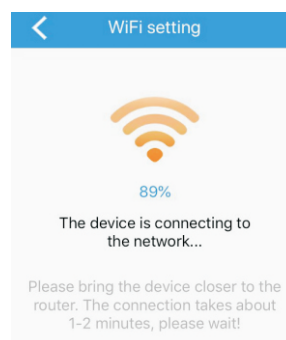
Step1: Click  to enter WIFI setting.



Step2: Click“WiFi setting” to enter the setting.

15

Step3: Select the router name and password, and click “Connect”, the WiFi connection will begin.



If the password is incorrect, the connection will fail and you will need to reset the camera first and then restart the camera.

The red and blue lights together. wait until the red light is on, the WiFi connection is successful(without SD card)

Note:

- ♦ WiFi name cannot include spaces.
- ♦ Most router have 2.4G/5G dual signal options, please choose 2.4G network.
- ♦ The camera connect to WiFi at the first time, please close to router and mobile phone.

16